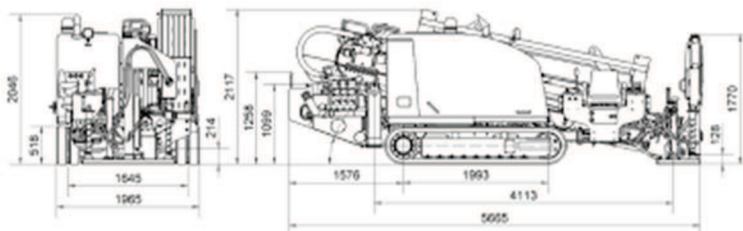
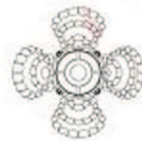
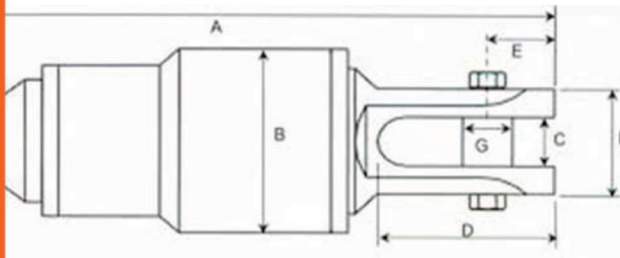


bestbore

The HDD tools one stop shop



www.bestbore.net

our story

As an HDD contractor for more than 12 years we have realized the need for toolings supplier specialized in the reign ,so we have gathered our expertise and knowledge to establish best bore to provide the market with all hdd tooling needed .



HDD contractors is the main focus of best bore, Est . we have established our store in Riyadh area to better serve our HDD customers and dealers across the king doom and the reign so the can have it when thy need it without any down time . best bore tools are designed for increased performance, durability and lower cost-per-foot; maximizing your investment.

best bore is manufacturing its products with special specifications and designs to increase durability and the life of the tool, we made sure we visit every factory and oversee the production of our products.

Rock bits

Our rock bits are made from top quality materials with IADC standards , with a variety of sizes to match all drilling machines and all ground conditions.



TRICONE

PART #	SIZE	THREAD	DESCRIPTION
Sealed roller bearing bit with gauge protection			
200-101	6"	2.88API	TCI/IADC:635
200-103	6.5"	3.5API	TCI/IADC:635
250-105	6"	2.88API	TCI/IADC:635
250-107	6.5"	3.5API	TCI/IADC:635
Journal sealed bearing bit with gauge protection			
200-102	6"	2.88API	TCI/IADC:637
200-104	6.5"	3.5API	TCI/IADC:637
250-106	6"	2.88API	TCI/IADC:637
250-108	6.5"	3.5API	TCI/IADC:637



PDC BIT

PART #	SIZE	THREAD	DESCRIPTION
250-151	6"	2.88API	Pdc 5 wings steel body
250-152	6.5"	3.5API	Pdc 5 wings steel body



CLAW BIT

PART #	SIZE
250-164	4.5"
250-165	6.5"

Bits and blades

Bits and blades for all machines and bolts patterns, built with high quality tungsten carbide for extra durability.



Round blade

PART #	CUT SIZE	BOLT
300-245	6"	DW 6X16MM
300-246	6.5"	DW 6X20MM

best used with sand



Taper blade

PART #	CUT SIZE	BOLT
300-247	4.5"	DW 6X16MM
300-248	6.5"	DW 6X20MM

best used with cabble



Claw blade

PART #	CUT SIZE	BOLT
300-249	4.5"	DW 6X16MM
300-250	6.5"	DW 6X20MM

Best used with sandstone



Reamers

Hole opener for rock ground conditions with new replaceable cutters design ,fluted or fly reamer all sizes available from 8 " up to 30" , all made from high strength steel with top quality tungsten carbide.



FLY CUTTING REAMER

PART NUMBER	SIZE	NUMBER OF WINGS
451-310	10"	3
451-314	14"	3
451-318	18"	3
451-322	22"	4
451-326	26"	4
451-330	30"	4

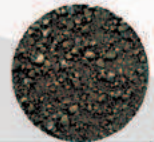
best use for sandstone and self-holding ground



FLUTED REAMER

PART NUMBER	SIZE
452-310	10"
452-314	14"
452-318	18"
452-322	22"
452-326	26"
452-330	30"

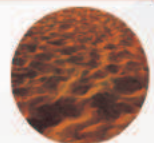
Best use for gravel



COMPACTION REAMER

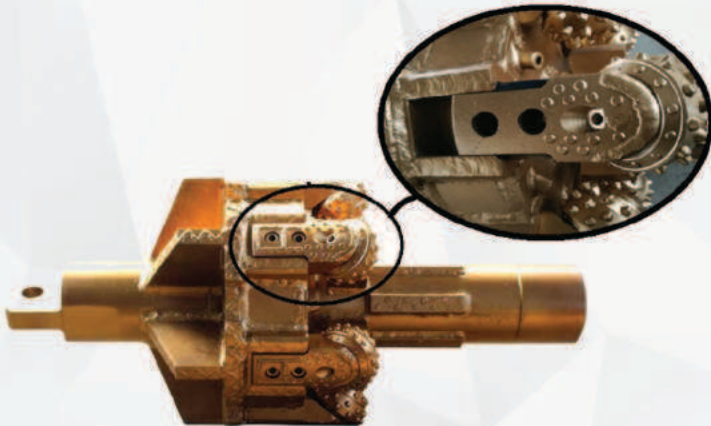
PART NUMBER	SIZE
453-310	10"
453-314	14"
453-318	18"
453-322	22"
453-326	26"
453-330	30"

best use for sand and not self-holding ground



Reamers

Hole opener for rock ground conditions with new replaceable cutters design ,fluted or fly reamer all sizes available from 8 " up to 30" , all made from high strength steel with top quality tungsten carbide.



HOLE OPENER WITH REPLACEABLE CUTTERS

PART NUMBER	SIZE	NUMBER OF HEADS	STABILIZER SIZE
454-310	10"	4	5"
454-314	14"	5	8"
454-318	18"	6	10"
454-322	22"	7	16"
454-326	26"	8	20"
454-330	30"	9	24"



HOLE OPENER WITH WELDED CUTTERS

PART NUMBER	SIZE	NUMBER OF HEADS	STABILIZER SIZE
455-310	10"	4	5"
455-314	14"	5	8"
455-318	18"	6	10"
455-322	22"	7	16"
455-326	26"	8	20"
455-330	30"	9	24"



PDC REAMER

PART NUMBER	SIZE	NUMBER OF WINGS	STABILIZER SIZE
456-310	10"	3	5"
456-314	14"	3	8"
456-318	18"	4	10"
456-322	22"	4	16"
456-326	26"	5	20"
456-330	30"	5	24"

Transmitter housing

Compatible Transmitter Housings to suit Vermeer® and Ditch Witch® HDD Drills, plus a universal box-box Transmitter Housing to attach any drill head .all made of steel 4140 .



SIDE-LOAD DIRT HOUSING

PART #	DIAMETER	BALDE BOLT
551-403	3.25"	DW 6X16MM
551-404	4.25"	DW 6X20MM



UNIVERSAL BOX HOUSING

PART #	DIAMETER
552-413	3.25"
552-414	4.25"



ALL TERRAIN HOUSING

PART #	DIAMETER	DEGREE
553-424	4.5"	2
553-425	5	2

Swivels

From 5 ton up to 60 ton made with high strength steel and Japanese bearings ,easy to rebuild design.



CLEVIS SWIVEL

PART NUMBER	SIZE
650-505	5
650-510	10
650-520	20
650-530	30
650-540	40
650-550	50



BOLT ON SWIVEL

PART NUMBER	SIZE
651-505	5
651-510	10
651-520	20
651-530	30
651-540	40
651-550	50

Drill pipes

All terrain and dirt pipes made from steel s135 ,and 4140 joints tested for maximum quality at affordable prices.

DIRT PIPE



PART #	LENGTH	BESND RADIUS	MODEL
751-631	3.0M	123'/37.5	JT 30/3020
751-640	4.5M	150'/45.7M	JT 4020
751-660	4.5M	170'/51.8M	JT 60
751-680	4.5M	205'/56.5M	JT 7020/8020/100

ALL TERRAIN PIPES



PART #	LENGTH	BESND RADIUS	MODEL
752-631	2.8M	145' / 44.2 m	AT30/3020
752-640	4.3M	205' / 62.5 m	AT 4020/ 60
752-680	4.5M	205' / 62.5 m	AT100

CHUCKS & SUB

Manufactured from 4140 heat treated alloy ,CNC machined Chucks and Saver-Subs,All Drive Chucks are available with a replaceable Saver-Sub . adapters also available so no need for welding and you get the option to use tools with different machines.



PART #	MODEL
DIRT PIPE DRIVE CHUCK	
851-727	JT2720
851-730	JT3020
851-740	JT4020
851-780	JT8020
851-700	JT100
ALL TERRAIN DRIVE CHUCK	
852-727	AT2720
852-730	AT3020
852-740	AT4020
852-700	AT100

ACCESSORIES

you find all what you need for HDD in one place



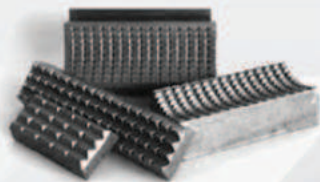
Breakout Wrench

PART NUMBER	TYPE
125-101	HAYDROLIC
125-102	MANUAL



HDPE Welding Machine

PART NUMBER	TYPE
125-103	UP TO 350MM
125-103	250MM TO 550



Vise jaws

PART NUMBER	MODEL
101-801	3020
101-802	4020
101-803	8020
101-804	100



Shackles

PART NUMBER	CAPACTY
102-811	5 TON
102-812	12 TON
102-813	28 TON
102-814	40 TON

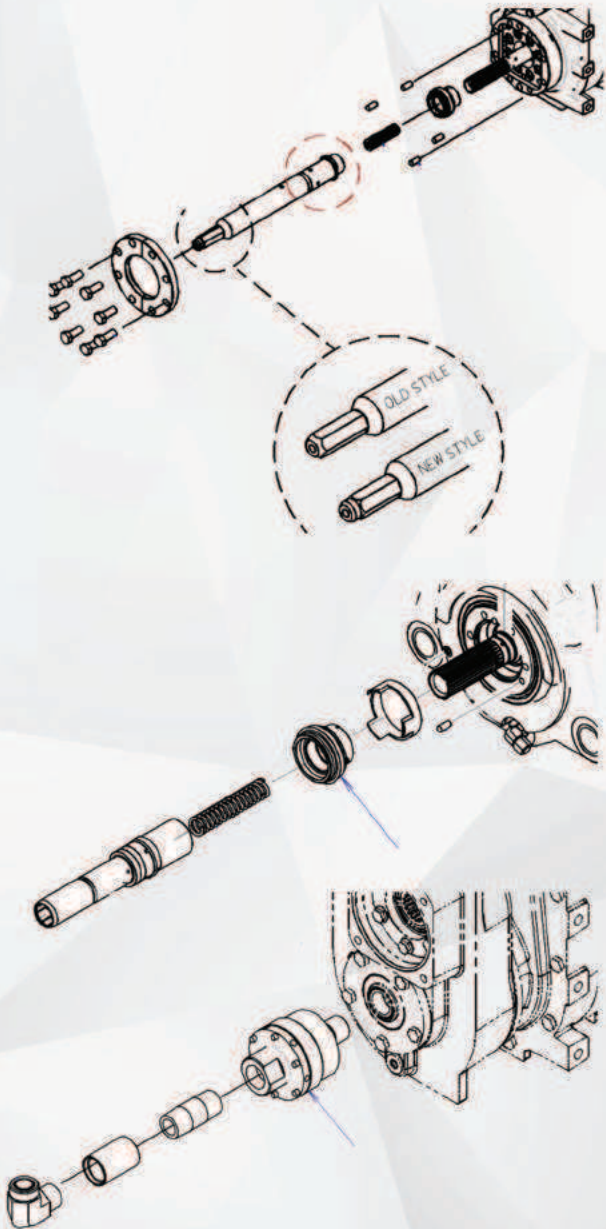


Wire puller

PART NUMBER	MODEL
109-871	AT3020
109-872	AT4020
109-873	AT100

Machines Parts

Inner rotation , seal kit pump parts water swivel, all replacement parts, ..etc . High level of professionalism and product dependability and competitive prices are reasons that underlie our success in the hdd industry.



AT INNER HEX DRIVE

PART NUMBER	MODEL
109-871	AT3020
109-872	AT4020
109-873	AT100

AT INNER WATER SWIVEL

PART NUMBER	MODEL
109-881	AT3020
109-882	AT4020
109-883	AT100

Water swivel

PART NUMBER	MODEL
109-891	AT3020
109-892	AT4020



Pump parts

Tooling Parts

cutters inserts , carbide teeth ,replaceable cones ,all made from top quality materials, always in stock i case you want to repair your tools which make it an investment pluse



TCI CUTTERS

PART NUMBER	CUT SIZE
400-910	10"
400-914	14"
400-918	18"
400-922	22"



BOLT ON CUTTERS

PART #	IADC	BESND RADIUS
454-951	637	6.5"
454-952	635	6.5"
454-953	637	8.5"
454-954	635	8.5"



PART #	IADC	BESND RADIUS
455-961	637	6.5"
455-962	635	6.5"
455-963	637	8.5"
455-964	635	8.5"

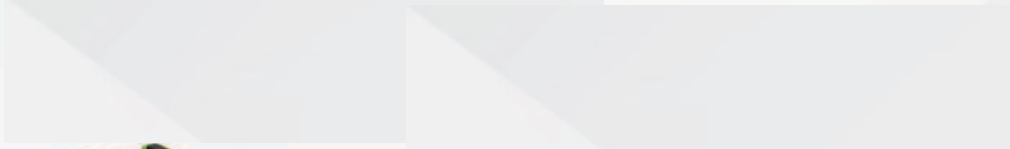
WELDING CUTTERS



CARBIDE TEETH

PART #	TYPE
400-971	TOOTH 22mm
400-972	BASE
400-973	TOOTH 18mm
400-974	BASE
400-975	SHARK
400-976	CON

Locating Systems



Underground



power cell



PART NUMBER

111-851

Nicad



PART NUMBER

111-852

Lithium Ion
Battery Pack



PART NUMBER

111-853

Rubber track

The products are made to international standards and quality norms using the highest quality of raw materials to meet the increased performance demanded



PART NUMBER	MODEL
100-981	3020
100-982	4020
100-983	8020
100-984	100

OUR SUPPLIERS HAVE A STATE OF THE ART MANUFACTURING FACILITIES , WE OVERSEE OUR PRODUCTS STEP BY STEP WITH OUR SUPPLIERS FROM THE DESIGN POINT TO MANUFACTURING AND QUALITY CONTROL WE ALSO TEST OUR PRODUCTS IN THE FIELD TO INSURE WE DELIVER TO OUR CUSTOMERS THE TOP QUALITY TOOLS THAT THY NEED AT THE .RIGHT PRICE



IADC EXPLAINED

BEST BORE follows the IADC bit classification system in which the first three digits classify the bit according to the formation it is designed to drill and the bearing/seal design used.

First Digit

1, 2, and 3 designate STEEL TOOTH BITS with 1 for soft, 2 for medium and 3 for hard formations. 4, 5, 6, 7 and 8 designate TUNGSTEN CARBIDE INSERT BITS for varying formation hardness with 4 being the softest and 8 the hardest.

Second Digit

1, 2, 3 and 4 are further breakdown of formation with 1 being the softest and 4 the hardest.

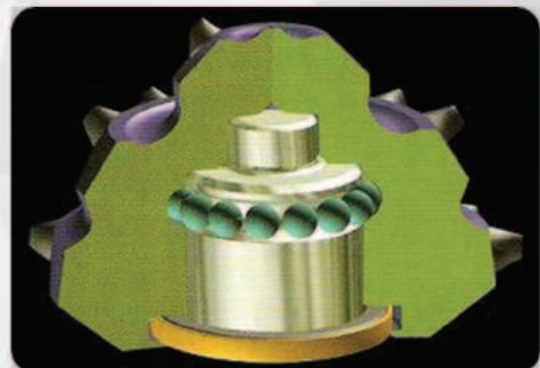
Third Digit

This digit will classify the bit according to bearing/seal type - see information on different bearing types - and special gauge wear protection as follows:

1. Standard open bearing roller bit
2. Standard open bearing roller bit, air-cooled
3. Standard open bearing roller bit with gauge protection which is defined as carbide inserts in the heel of the cone
4. Sealed roller bearing bit
5. Sealed roller bearing bit with gauge protection
6. Journal sealed bearing bit
7. Journal sealed bearing bit with gauge protection

TRICONE BIT BEARING EXPLAINED

Sealed Roller Bearings have some of the features of the non-sealed open bearings, but longer lifetime because the bearings are sealed with an O' Ring Seal.



WHY BESTBORE STORE ?



Constant Innovation

Our expert team is relentless about engineering ground-breaking tools, improving materials selection, creating a smoother sales process, and delivering more personalized & attentive customer service.



Custom Solutions

Whether your job requires a modification to a tool we have in our inventory, or you need us to develop an entirely new solution, we can design it, manufacture it and get it to you fast—every time.



Quality Control

We personally inspect each tool during every stage of the manufacturing process. Tools that don't make the cut (there aren't many, by the way) are scrapped before they leave the factory floor.



State-of-the-Art manufacturers

No rusty production warehouses for us. We engineer and manufacture all our products in a spotless, modern facility, using state-of-the-art computerized machining stations that we maintain using lean methodology.



Affordable prices

No more losing a Fortuin every time you need to get your self ready for a project or accidentally lost tooling under ground.



Rapid Shipping

When you need a new tool, we know the clock is ticking. We double-check every order before shipping and pack every product in sturdy foam & shrink wrap, designed specifically to handle the weight and nonstandard shapes of our tools.



Lasting Relationships

We care what happens to our products after they leave our plant. Every tool we ship is more than an order.

location



 6367 Abdullah Bin Rashidan St. ,Alhamra
Riyadh , 13217 - 3563
Kingdom Of Saudi Arabia.

 +966 546 975 621

 www.bestbore.net

 info@bestbore.net



Note

A series of horizontal dotted lines for writing notes.



best bore

HDD TOOLS

WWW.BESTBORE.NET